

WOLFCOM ENTERPRISES

# VENTURE™

---

User Manual



The contents of this page are protected by copyright laws. This user manual is not to be posted online on any website or forum without written authorization from Wolfcom Enterprises.



Developed by Wolfcom Enterprises, this patent Pending technology protects the user from loss of audio and video recording should the external camera or POV (Point of View) camera become detached from the main recording unit.

Critical Re-Connect Technology (CRC).

Point of View (POV) body cameras are worn on the head of the user so that audio and video from the camera records the users point of view perception. Point of view body cameras normally consist of two parts. The main recording unit and the external POV camera.

The main recording unit typically contains a battery and memory for storage and is worn on the belt or chest area of the user. The external POV camera typically has a built-in microphone and is connected or plugged into the main unit via a cord. When recording is activated, audio and video signals from the external POV camera are sent to the main unit and recorded onto the memory.

### **The Problem**

In the event the external POV camera is disconnected from the main unit, all audio and video recordings will cease and the body camera will become inoperable. Some police officers wear POV cameras and will at times find themselves in a physical altercation with a suspect. During a struggle or pursuit, the POV camera may be yanked and disconnected from the main unit resulting in loss of audio and video recording from that point on.

### **The Solution**

Wolfcom Enterprises Critical Re-Connect technology addresses this problem. Our POV camera system also consist of 2 parts. The main recording unit and the external POV camera with built-in microphone. However, our main recording unit also has a built-in camera and microphone. In the event the external POV camera is disconnected from the main recording unit, the built-in camera and microphone of the main unit will activate and audio and video recording will resume.

### **Alerts**

As soon as the main recording unit senses that the external POV camera has been disconnected, it will vibrate and chirp to alert the user that the external POV camera has been disconnected and will then activate its built-in camera and microphone to resume audio and video recording.



### **Anti Video Deactivation (AVD) Technology (Patent Pending)**

With other body cameras, in the event of a fight or struggle with a suspect, the video deactivation switch or button might be accidentally pressed or bumped resulting in the unit being powered off. With the Wolfcom Venture patent pending Anti Video Deactivation Technology, the unit will continue to record no matter what.

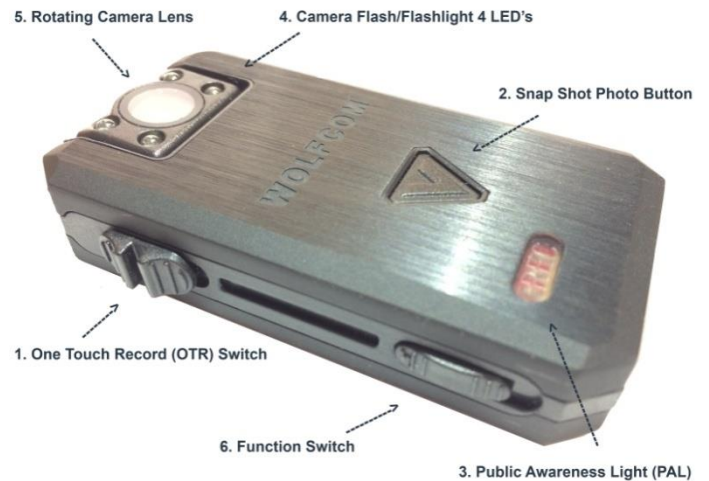
The last thing your department needs is video that is lost from an unreliable body camera. Always look for the AVD symbol when purchasing a body camera.

# How to use the camera:

The following are instructions on connecting your unit to the computer to view files.

1. First make sure that the OTR (One Touch Record; On/Off) Switch is in the up position and that the unit is powered off.
2. Plug the supplied 10 pin USB cable into the bottom of the unit and the other end into the USB port on your computer.
4. Power on the unit by sliding the OTR Switch Down and the unit will power on. The drive for the camera will open and you will be able to view your files.

**IMPORTANT\*** The USB cables that are included with your unit are specially designed with a 10-pin connection. Using a 3rd party USB cable will not work and may damage the unit. Please be sure to only use the cables that came with your unit.



## Recording

During video recording, you can also snap photos during video recording.

### **To Activate Video Recording:**

Slide the OTR switch down. The unit will vibrate 3 times and will begin recording audio and video.

### **To Deactivate Video Recording:**

Slide the OTR switch up. The unit will vibrate once and stop recording.

Using AVD: To deactivate while AVD is activated, you must slide the OTR switch up, down and up again to deactivate. The unit will vibrate once and stop recording.

### **During Video Recording you can:**

- Activate and Deactivate the flashlight by pressing the flashlight button on top of the camera module
- Silently snap a photo by pressing the Snap Shot button, the V in the front of the camera. The Venture allows the unit to snap photos while simultaneously recording video.
- Confirm whether or not the unit is recording video by checking the Status indicator light. Steady Red= Recording in Progress, Yellow=Unit is charging. Green=Unit is fully charged.



## How to Charge the unit:

Plug the supplied 10 pin USB cable into the bottom of the unit and the other end into the USB port on your computer or to the wall. The status LED on the top of the unit will turn "Yellow"(charge). Once the Status LED turn "Green" it means that the unit is fully charged.

**IMPORTANT\*** The USB cables that are included with your unit are specially designed with a 10-pin connection. Using a 3rd party USB cable will not work and may damage the unit. Please be sure to only use the cables that came with your unit.

**WARNING\*** Max power input for the VENTURE will be 1000mAh.

## How to use the flashlight:

The flashlight will only work during video recording. The flashlight will not work if the OTR switch is in the UP position. To activate the flashlight, press the flashlight button on top of the camera module once. To deactivate the flashlight, press the flashlight button again.

## How to take pictures:

While you're recording, you can actually take a picture without interrupting the video recording. To do this, while you are recording, simply press the "V" button in the front to snap a picture.

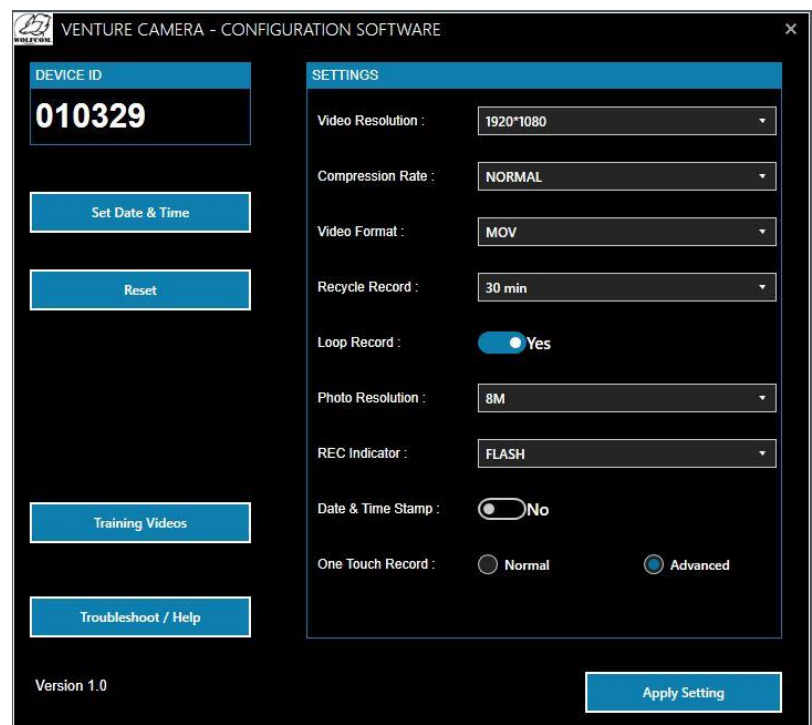
## How to reset the unit:

If your unit freezes or becomes none responsive, try resetting. Make sure the One touch record switch is in the up position. Take a paper clip or needle and stick into the Reset hole gently and you will feel a click.

## VENTURE Camera – Configuration Software:

To change settings for the VENTURE camera, download the VENTURE Configuration Software onto your PC. Download can be found on the website: <http://venturebodycam.com/download/>

To use the configuration software, connect the VENTURE to your PC via the USB cable that came with the camera with the on/off switch in the "OFF" position. Open the VENTURE configuration software. Switch the on/off switch to "ON" and then press the "V" on the front of the camera. This will connect your VENTURE to the software. Now you can select the setting you need and press "Apply Setting" to configure the camera.



## Trouble Shooting Guide for the Venture

Problem	Possible Causes 1	Possible Causes 2	Possible Causes 3	Possible Causes 4
Unit does not power on.	<u>Battery is dead</u> Using the included USB cable and power adapter. Please charge the unit for at least 2 hours. when charging the pilot light at the top of the unit will turn yellow. Once the unit is fully charged the pilot light will turn green.	<u>Unit is frozen.</u> This may have happened by sliding multiple switches at the same time. The unit is design to lock up if switches are slid at the same time. Please use a small pointed object like a paperclip and press the reset button at the bottom of the unit to the right of the USB socket.	The Wolfcom Venture has a <u>built-in over heat sensor</u> that will power off the unit if in high temperatures. This usually will happen if you are located in deserted environments and left in extreme heat for an extended period of time. Please use a small pointed object like a paperclip and press the reset button at the bottom of the unit to the right of the USB socket.	
The unit will not start recording.	<u>Battery is dead</u> Using the included USB cable and power adapter. Please charge the unit for at least 2 hours. When charging the pilot light at the top of the unit will turn yellow. Once the unit is fully charged the pilot light will turn green.	<u>Memory may be full.</u> On your PC, open the Wolfcom Venture setup software and connect your unit with the included USB cable to your PC. Then power on your unit and click on "Connect to computer". On your PC click on "My Computer". Right click on the folder for your body camera and select properties. If your unit is full, you will have to go into the folder and delete some files.	<u>Unit is frozen.</u> This may have happened by sliding multiple switches at the same time. The unit is design to lock up if switches are slid at the same time. Please use a small pointed object like a paperclip and press the reset button at the bottom of the unit to the right of the USB socket.	
The unit is frozen or turned off and will not power on	<u>Battery is dead</u> Using the included USB cable and power adapter. Please charge the unit for at least 2 hours. when charging the pilot light at the top of the unit will turn yellow. Once the unit is fully charged the pilot light will turn green.	<u>Unit is frozen.</u> This may have happened by sliding multiple switches at the same time. The unit is design to lock up if switches are slid at the same time. Please use a small pointed object like a paperclip and press the reset button at the bottom of the unit to the right of the USB socket.	The Wolfcom Venture has a <u>built-in over heat sensor</u> that will power off the unit if in high temperatures. This usually will happen if you are located in deserted environments and left in extreme heat for an extended period of time. Please use a small pointed object like a paperclip and press the reset button at the bottom of the unit to the right of the USB socket.	
The flash always flashes when I take a picture.	<u>This is normal.</u> The Unit is programmed to flash to capture a clear image. This cannot be reprogrammed			

The Red Pilot light on the top of the unit will not turn off.	<u>Unit is frozen.</u> This may have happened by sliding multiple switches at the same time. The unit is design to lock up if switches are slid at the same time. Please use a small pointed object like a paperclip and press the reset button at the bottom of the unit to the right of the USB socket.			
There is no Vibration when I turn on the unit.	<u>Unit is frozen.</u> This may have happened by sliding multiple switches at the same time. The unit is design to lock up if switches are slid at the same time. Please use a small pointed object like a paperclip and press the reset button at the bottom of the unit to the right of the USB socket.			
Unit does not charge when using the wall charger or plugging into the PC.	<u>Your wall power outlet may not be working.</u> Please try another wall outlet.	<u>The USB cable may be damaged.</u> Please replace the USB Cable with only Wolfcom Venture cables. Please contact your local dealer or rep.	<u>The Power adapter or USB port on the PC may be damaged.</u> Please try another USB port or another PC or try replacing the adapter.	<u>The USB port on the unit may be damaged.</u> Please contact your local dealer or rep.
The flash light is not working.	<u>Solution.</u> Please contact your local dealer or rep.			
The photo and video files do not have the correct date and time stamped.	<u>Your computer time may not be correct.</u> Make sure the time on your computer is correct. our unit are programmed to sync with your computers time.			
When playing back a video file on my PC, there is video but no sound.	<u>Your PC may be missing the proper video codec.</u> Please contact your local dealer or rep.	<u>You may have Audio set to "Off" in the Wolfcom Configuration software.</u> Please Change the Audio settings to "On".	<u>There may be something blocking the Microphone on the unit.</u> Please make sure there is nothing blocking the Microphone.	
When playing back Video, it plays through QuickTime. I want it to play through Windows Media Player.	You have your default player as QuickTime. The Videos files can play on just about any kind of player. Just change your default player to Windows Media or right click on the Video File and Select "Open With" and select the player you would like to use.			